



ISSN: 2456-0057
IJPNPE 2018; 3(1): 601-603
© 2018 IJPNPE
www.journalofsports.com
Received: 19-11-2017
Accepted: 20-12-2017

Mohamed Rafie Khanday
Research Scholar Bhagwant
University Rajasthan, India

Tariq Ahmad Wani
Research Scholar Bhagwant
University Rajasthan, India

Adolescent's parental support for choosing profession of physical education and allied discipline

Mohamed Rafie Khanday and Tariq Ahmad Wani

Abstract

The study was conducted to find out the parental support for choosing profession of physical education and allied discipline. The subject (N =120) male and female parents were selected randomly from district Budgam out of 120 subjects 60 from private schools and 60 from govt. Schools were selected for the study. A questionnaire measuring adolescent parental support of the school going boys and girls was used as a tool. This questionnaire has been developed by Dr. Nandewana and Dr. Nimmi Asana (udhaypur) which consists of 37 questions. The result of the study showed that parental support for choosing profession of physical education and allied discipline. Was in section I parent interest (74.17%) am highly supported section II parental behavior (58.33%) is given high support towards physical education and sports. Section III parental a provision (70.33%) is highly supported. Overall support was seen for all three sections and marked as 18.63%.

Keywords: Adolescents, physical education and allied discipline

Introduction

Adolescent's parental support for choosing profession of physical education and allied discipline is one of the most important contributions for larger participation and enhancement of better performance in sports events. Parents can help in the adolescents development. Greater the parents support greater will be the social competence {Self-esteem, moral behavior, academic achievement and vocational achievements}. Support can be shown in several ways such as physical affection, companionship and sustained contact. Period of adolescents is one of the most crucial and critical as well it is during this time that they struggle with their own identity. They are progressing into a period of maturation and development that is scar an uncertain. They need guidance and strong support feature that comes from their parents Adolescents need their parents both for guidance and support during this crucial point in their life. He further indicated that parents by form the strong foundation for the social skills and self-roles which have long term impact on the adolescent's decision and plans when they provide the emotional security which the adolescents need.

Methodology

As every research demands a systematic method and procedure like this chapter adapts the following procedure including information regarding research design, source of data, selection of subjects, sampling method, selection of test and criterion measures, administration of tests and collection of data e. t.c. A research become successful accompanied and supported by some reliable and authentic data.

Research design

This research study goes through a method of survey research. In fact, survey is a method of research that involves systematic completion, explanation, analysis and reporting of relevant facts concerning and enterprise, an institution/institutions and a population and is some aspects thereof The basic rationale is to establish present practices, conditions or the effectiveness of the enterprise in order to provide guidance to their justification of development of present status.

Correspondence
Aniruddha Malgaonkar
Research Scholar Bhagwant
University Rajasthan, India

Sample

The population of the study was the parents of school going boys and girls. age ranged from 12 to 18 years. the total no of schools in district budgam is approx. 40. out of these 4 schools were selected 2 from and 2 from govt. schools were the target population for the present study

The study was conducted to find out the parental support for choosing profession of physical education and allied discipline. the subject(N =120) male and female parents were selected randomly from district Budgam lout of 120 subjects 60 from private schools and 60 from govt. Schools were selected for the study.

Tools

A questionnaire measuring adolescent parental support of the school going boys and girls was used as a tool. this questionnaire has been developed by dr. nandewana and dr. nimmi asana (udhaypur) which consists of 37 questions.

Results

Table 1: adolescent’s parental interest for choosing profession of physical education and allied discipline.

Parental interest		
Total	High support	Low support
120	89	31
Percentage	74.17	25.83

support and if the score falls down 0-20 it means parental interest shows low support. It is revealed from table 1 that 74.17% adolescent parental interest for choosing profession of physical education and allied discipline is found to be According to the norms if the score falls 21-31 it means the parental interest shows high high where as 25.83% shows low support

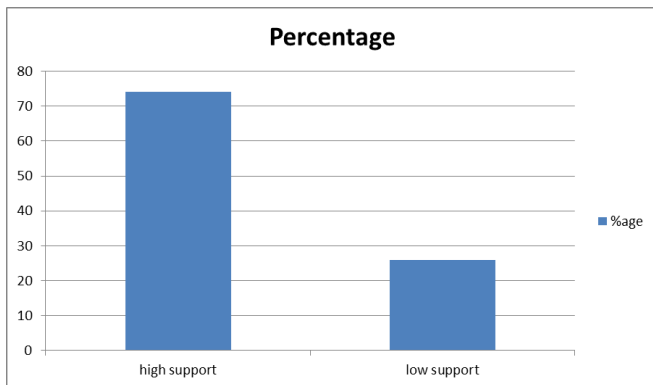


Fig 1: The percentage of the parental interest was graphically represented in

Table 2: Adolescents parental behavior for choosing profession of physical education and allied disciplines

Parental behavior		
Total	High support	Low support
120	70	50
percentage	58.33%	41.67%

According to the norms if the score falls 35-51 it means that parental behavior shows high support and if the score falls down 0-34 it means parental behavior shows low support.

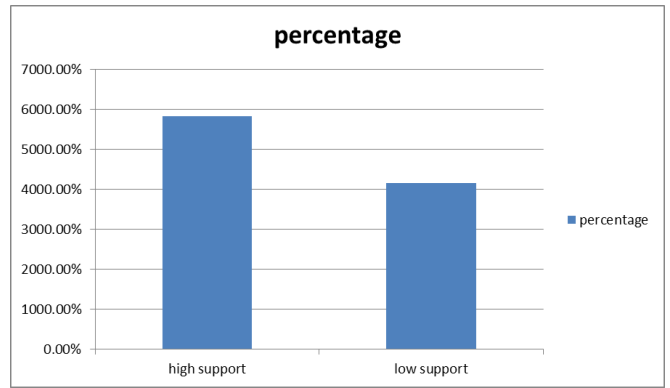


Fig 2: The percentage of the parental behavior was graphically in

Table 3: Adolescents parental interest for choosing profession of physical education and allied discipline

Parental provision		
Total	High support	Low support
120	85	35
Percentage	70.33	29.7

According to the norms if the score falls 21-30 it means the parental provision shows high support and iof the score falls down 0-20 it means parental shows low support It is examined from table 3 that 70.33% adolescents parental provision for choosing profession of physical education and allied discipline is found high and whereas 29.17% shows low support.

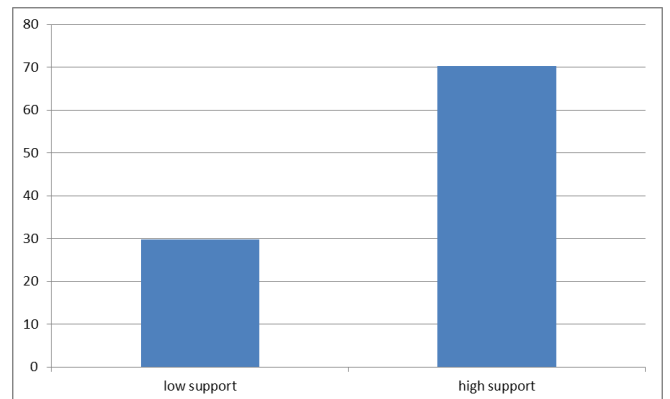


Fig 3: The% age of the parental provision was graphically represented in

Table 4: Adolescents parental overall support for choosing profession of physical education and allied disciplines

Overall support		
Total	High support	Low support
120	98	22
Percentage	81.67	18.63

According to the norms if the overall score falls 75 and above it means it shows high support and if the score falls down 0-74 it means it is low support. It is examined from table 4 that 81.67% adolescents parents overall support for choosing profession of physical education and allied discipline and found to be high whereas 18.63% shows low support.

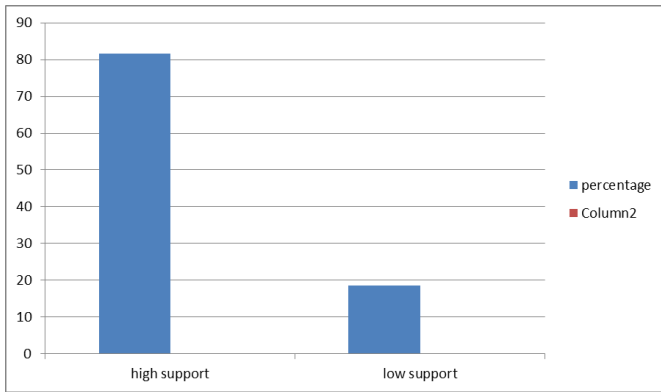


Fig 4: The % age of the parental overall support was graphically represented in Percentage

Summary

The purpose of the study was to investigate the adolescent's parental support for choosing profession of physical education and allied discipline. In this study of parental support, the research scholar distributed 120 questionnaires among 120 of school going boys and girls of four schools of district Budgam in jammu and Kashmir. The questionnaire of Dr. Shobha Nandewana and Dr. Nimmi asana (Udhyour) was employed for collection of data. the collected data was treated statically by applying percentage and chi square test the level of significance to test the significant differences if any was set at 0.05. The result of the study showed that parental support for choosing profession of physical education and allied discipline. Was in section I parent interest (74.17%) am highly supported section II parental behavior (58.33%) is given high support towards physical education and sports. Section III parental a provision (70.33%) is highly supported. Overall support was seen for all three sections and marked as 18.63%

The findings showed that majority of parents extended high parental support for choosing profession of physical education and allied discipline which are notable.

1. Parents agreed and supported their adolescents for that participation in physical education.
2. Favored the need of physical education and allied discipline.
3. Agreed as it provides an opportunity to develop friendly relationship with others.
4. Agreed upon physical, mental, emotional, social and educational contribution of physical education and allied discipline.

Conclusions

The adolescent's parental support showed for choosing profession of physical education and allied discipline was found to be supported.

1. It was also observed that the adolescents were highly supported by their parents.
2. It was also observed that parent's high support develops adolescents interest and positive thinking towards any profession.

Recommendations

Based on the conclusion of the study the following recommendations are made

1. Similar study can also be conducted on girl's parental support towards the physical education.
2. Similar study can be conducted on the importance of participation in physical education and sports events.

3. Similar study can be conducted on different age groups.

References

1. Alia KA, Wilson DK, St George SM, Schneider E, Kitzman-Ulrich H. Effects of parenting style and parent-related weight and diet on adolescent weight status. *Journal of Pediatric Psychology*. 2013; 38(3):321-329. doi: 10.1093/jpepsy/jss127. [PMC free article] [PubMed] [Cross Ref]
2. Arnett J. Adolescent storm and stress, reconsidered. *American Psychologist*. 1999; 54(5):317-326
3. Bandura A. Health promotion by social cognitive means. *Health Education and Behavior*. 2004; 31(2):143-164. doi: 10.1177/1090198104263660.
4. Basch CE. Healthier students are better learners: High-quality, strategically planned, and effectively coordinated school health programs must be a fundamental mission of schools to help close the achievement gap. *Journal of School Health*. 2011; 81(10):650-662.
5. Grusec JE, Goodnow JJ. 'Impact of parental discipline methods on the child's internalisation of values: A reconceptualisation of current points of view', *Developmental Psychology*. 1994; 30:4-19.
6. Wright MS, Wilson DK, Griffin S, Evans A. A qualitative study of parental modeling and social support for physical activity in underserved adolescents *Health Education Research*. 2010; 25:224-23
7. Parental influences on physical activity in children: An exploration of potential mechanisms *Pediatric Exercise Science*, 2003; 15:19-33
8. World Health Organization, W.H.O. Global recommendations on physical activity for health World Health Organization, Geneva (2010)